



Compassionate care, outstanding outcomes

**Trust the pioneers in transplant care
for your organ transplant**



Hume-Lee
Transplant Center

vcuhealth.org/transplant

If you or a loved one is considering an organ transplant, you or your physician may refer to a transplant center for an initial appointment.

We want to provide the information, support and reassurance you need.



We've prepared this chart to help you better understand the screening and pre-transplant process. Our team of transplant experts will guide you through each step in your transplant journey as you prepare to receive this gift of life.



VCU Health Hume-Lee Transplant Center

Hume-Lee Transplant Center is one of the nation's leading transplant programs, with survival rates and outcomes that consistently meet or exceed national standards.

Our success is backed by a history of innovation. In fact, VCU Health established one of the nation's first programs in solid organ transplantation in 1956. Since then, the program has continued to pioneer organ transplantation, completing Virginia's first:

- Kidney transplant
- Adult and pediatric liver transplants

Hume-Lee Transplant Center has a long history of performing successful organ-specific transplants:

- Heart
- Kidney (living and deceased donor)
- Liver (living and deceased donor)
- Lung
- Pancreas
- Pancreatic Islet Cell Transplantation
- Pancreatectomy with Islet Cell Autotransplantation (TP-IAT)

Our dedicated team continues to identify and implement cutting-edge technology to improve already strong patient outcomes. Hume-Lee Transplant Center is proud to have:

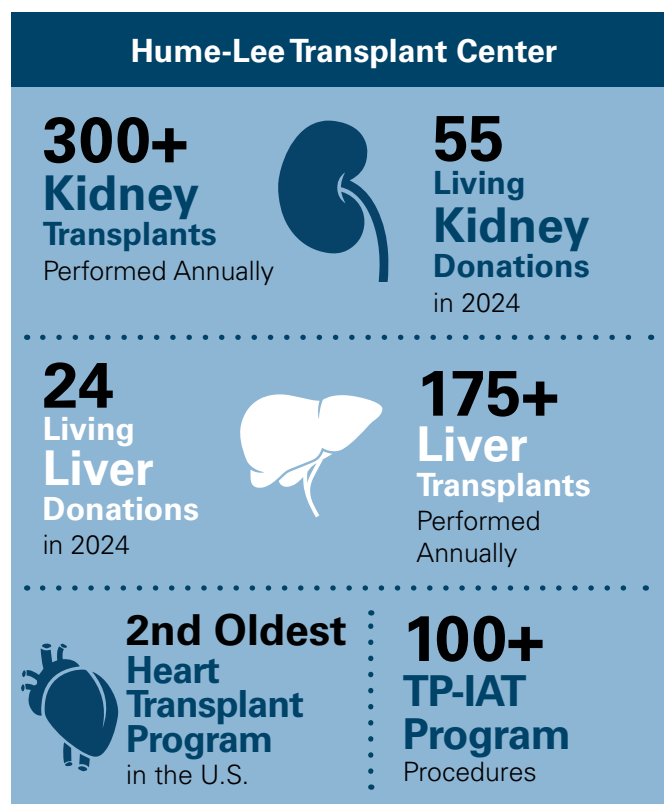
- Top-tier transplant physicians and surgeons who pioneered minimally invasive robotic-assisted transplant procedures
- One of the first tissue-typing labs in the world
- Internationally and nationally recognized clinical liver cell transplant program
- Award-winning transplant nursing staff

Your organ transplant team

The entire Hume-Lee transplant team works together to support you and ensure your transplant is successful.

The team members who may be involved in your care include:

- Cardiologist, hepatologist, nephrologist or pulmonologist
- Transplant surgeon
- Transplant nurse coordinator
- Transplant nurses
- Social worker
- Pharmacist
- Psychologist
- Pulmonologist
- Radiologist
- Financial coordinator
- Dietician
- Other physician specialists (i.e., endocrinologist)



Waiting for your transplant

Wait times for transplants vary. Waiting for a kidney transplant can take an average of two to six years, while the wait time for a liver transplant is usually one to three years. For a heart, the wait time can wildly vary due the patient and possible mechanical circulatory support devices that can be used to keep patients alive until they receive a transplant. On average, people wait for about six to eight months for a donated lung.

All the while, patients are getting sicker. That's why Hume-Lee — through clinical expertise and innovation — works to lower patient wait times to as low as possible.

While you wait for your call, your transplant team will continuously monitor you. It's important to maintain your health during this time by doing the following:

- Maintaining a healthy diet
- Staying as active as possible
- Managing your stress
- Building your support network with friends and family

After your transplant

We want our patients to return to their normal lives as quickly, and safely, as possible. Your healing will be specific to your organ transplant and surgical procedure

VCU Health's Hume-Lee transplant surgeons employ minimally invasive surgical techniques when able. This means that a number of our patients can expect smaller incisions and quicker recovery times.

You'll likely stay in the hospital at least a few days (and sometimes more) after your transplant to ensure that your new organ is functioning well, and you have all instructions necessary to promote your healing.

This includes understanding what medications to take as well as any restrictions to your activity and diet. Your transplant team will also provide a schedule for your follow-up appointments and any required rehabilitation.

Still have questions?

Our transplant team is here answer questions about your transplant journey.

Call **(804) 828-4104** to speak with a team member or for more information visit [**vcuhealth.org/transplant**](https://vcuhealth.org/transplant).



Hume-Lee
Transplant Center